



english version

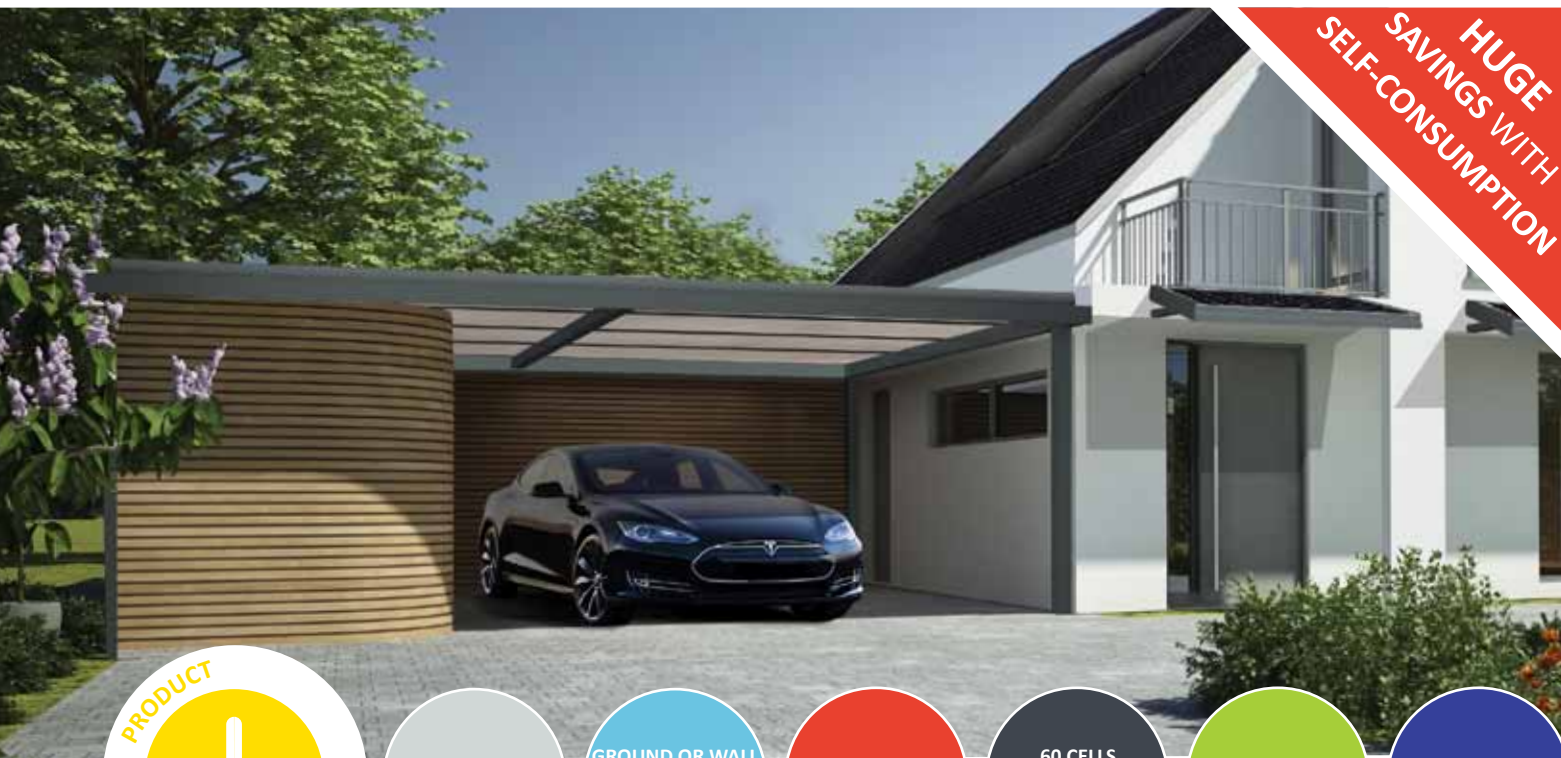


IRFTS[®]
SOLAR SOLUTIONS

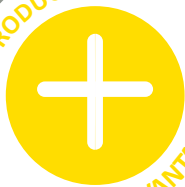
IRFTS SHADOW SOLAR

SOLAR SHADE HOUSE STRUCTURE - ENERGY PRODUCTION AND SUN PROTECTION

HUGE SAVINGS WITH SELF-CONSUMPTION



PRODUCT



ADVANTAGES

RAINWATER DRAINAGE

GROUND OR WALL MOUNTED SOLUTIONS

WATERTIGHT SOLUTION

60 CELLS FRAMED PV MODULE

ENERGY OPTIMIZATION

COMPATIBLE WITH MICRO INVERTER

KNOW MORE:



Discover the new photovoltaic shade house structure solutions by IRFTS with **IRFTS SHADOW SOLAR HOME** and **GARDEN** compatible with all types of **60 cells - 6"** framed PV modules ⁽¹⁾.

It can be used for **ground** or **wall** mounted installations. Additional living spaces and new storage facilities can easily be created whilst **comfort and solar protection are optimized**.

Thanks to its well designed configuration, the shed provides a high level of ventilation to maximize the efficiency of the photovoltaic installation.

The sleek-featured shed combined with costs energy saving is today **the most complete solution available on the market!**

ASSEMBLY INSTRUCTIONS:



CONTACT:

IRFTS

26, rue du 35^{ème}
Régiment d'Aviation
69500 BRON
(FRANCE)

+ 33 (0)4 78 38 83 10

info@irfts.com



Solar Shade House Structure - IRFTS SHADOW SOLAR

Compatible with all types of 60 cells - 6" framed PV modules ⁽¹⁾

Technology

- Shed house structure 100 % waterproof with a PV module slope of 5° for extreme energy efficiency.
- Rainwater harvesting down the supportive feet of the shed. Optional connection to a manhole or existing water tank.

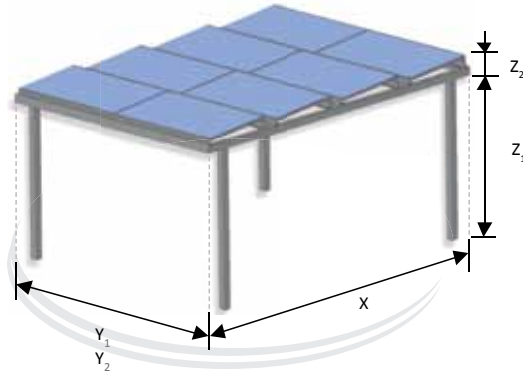
Applications

- **Residential** - Terrace, sundeck, balcony, patio, pool house, carport, canopy ...
- **Commercial** - Large patio, outdoor shopping area, awning ...
- **Public building** - Entrance, lobby, smoking area, bikes shelter, stations ...
- **Agricultural and Industrial buildings** - Shelter, lean to, industrial outlet ...

Range

- 2 versions of the shade house are available:

IRFTS SHADOW SOLAR GARDEN
(4 mounting feet version)



IRFTS SHADOW SOLAR HOME
(2 mounting feet version)



Configuration

- 2 rows x 2 columns
- 3 rows x 3 columns
- 4 rows x 2 columns
- 4 rows x 3 columns

Dimensions and surface

- | | | | |
|--|---|---|---|
| <ul style="list-style-type: none"> • X : 2330 mm • Y₁ : 3418 mm • Y₂ : 3441 mm • Z₁ : up to 2400 mm • Z₂ : 275 mm • 8 sqm | <ul style="list-style-type: none"> • X : 3517 mm • Y₁ : 5094 mm • Y₂ : 5128 mm • Z₁ : up to 2400 mm • Z₂ : 275 mm • 18 sqm | <ul style="list-style-type: none"> • X : 4744 mm • Y₁ : 3418 mm • Y₂ : 3441 mm • Z₁ : up to 2400 mm • Z₂ : 275 mm • 16 sqm | <ul style="list-style-type: none"> • X : 4744 mm • Y₁ : 5094 mm • Y₂ : 5128 mm • Z₁ : up to 2400 mm • Z₂ : 275 mm • 24 sqm |
|--|---|---|---|

Installation ⁽²⁾

- Ground AND / OR wall mounted installations

Orientation

- Landscape

Material

- Aluminium

Color

- Anthracite matt granulated grey (RAL 7016)
- OR
- white (RAL 9010)

Options

• Kit LED

Strip LED : IP62 - Neutral white 4000 K⁽³⁾
- 780 Lumens / m - 2x5 m
Supply : IP 67 - 4.2 A / m - 24 V
Remote control with ON/OFF and variation of light intensity functions



• Cealing

White polycarbonate plate, 16 mm



- Feet base for installation on concrete slab.

- Assembly kit for IRFTS SHADOW SOLAR side by side junction

(1) PV modules are not included with IRFTS SHADOW SOLAR kit. Compatible with 60 cells - 6" framed PV modules:
Y₁ with a length from 1635 to 1676 mm, width : 986 to 1001 mm, thickness : 30 to 46 mm.
Y₂ with a length from 1655 à 1685 mm, width : 986 to 1001 mm, thickness : 30 to 46 mm.

(2) Fixings are not included with IRFTS SHADOW SOLAR kit. (3) Light variations of colors can appear between 2 strips of LED.

Your nearest contact :



www.irfts.com