



On-roof system Tau+
Product catalogue



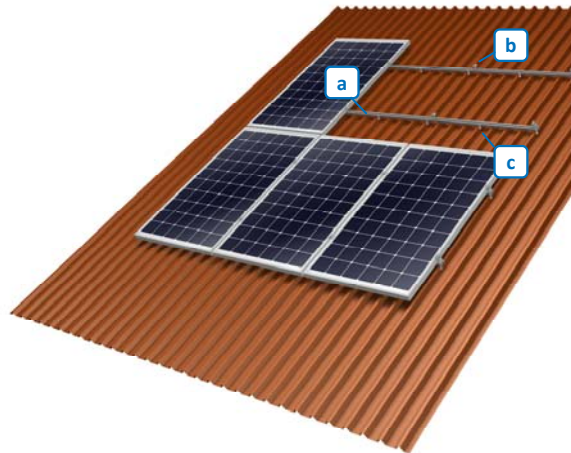
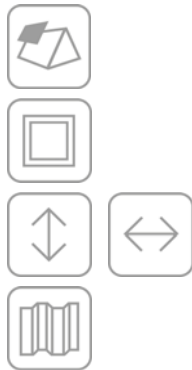
CONTENTS

TAU+	3
1. TAU+ BASE RAIL	4
2. TAU+ FIXING CLIPS	5
3. TAU+ EPDM	6
4. TAU+ SETS OF SMALL PARTS	6
5. TAU+ INTER-MODULE CLAMPS AND MODULE END CLAMPS	6
6. CABEL FIXING	7
7. TAU+ SAMPLES	7

In general:

-
- | For all business transactions, Mounting Systems GmbH's "General terms and conditions" are valid, as well as any items negotiated and confirmed for a specific transaction.
 - | Through the publishing of this catalogue, all former catalogues become invalid.
 - | All information in this document may be subject to alterations.
-

Tau+



Components

- a. Base rail
- b. Module fixation (adapted to frame height)
- c. Fixation at the bead

Notes

- | Tau is ordered **piece by piece**.
- | Using our **Tau⁺-Calculation Tool**, you can easily verify the static soundness of your system, create a bill of materials and calculate your price.
- | The bead height is flexible. In case of a very low bead height (below 20mm) an alternative holder can be screwed onto the top of the trapezoidal sheet as opposed to the standard holder, which is fixed laterally.
- | For this system, we have put together a wide range of **documentation** for your convenience. We can provide technical data sheets and installation manuals in different languages. Please do not hesitate to ask for them.
- | When requesting quotations, please use our form “**Technical Planning Aid**” (On-roof/Eternit or metal cladding) and mail it to sales@mounting-systems.com.
- | **Delivery time:** Goods issue ex works within 3 days after receipt of written order.

Sample order*:

Art.-No.	Description	Quantity	Unit
Sample order Tau⁺			
712-0137	BR 1/15 CS; landscape pre-ass.	450	pce
720-1188	100x JF3-ZT-2-5,5x25-E11	9	sets
720-1187	50x JF3-ZT-2-5,5x25-E11	1	sets
700-0082	Inter-module clamp FH 38-50 mm	350	pce
702-0186	End clamp FH 46 mm	100	pce
810-0107	Installation manual Tau ⁺ ENG	1	pce

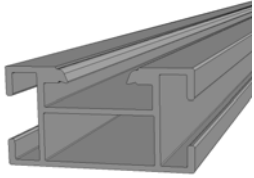
* example:

Module field with 8 rows and 25 columns, Module type Conergy PowerPlus 250P, Modules orientation landscape, shed roof, trapezoidal sheet thickness (steel) 0.75 mm, Corrugation spacing 207 mm, height of building 8 m, pitch 10°, ground elevation 80 m, terrain category A, wind zone II and snow zone II, non-exposed site

1. Tau+ base rail

Description

Tau+ BR 1/21



h/w = 21.1/40
 Aluminium (EN AW 6063 T66)
 $I_x = 1,20 \text{ cm}^4$
 0.554 kg/m

Lenght	Single part
BR 1/21 CS; 6.0m	800-0984
BR 1/21 CS; 2.4m	800-1048
BR 1/21 CS; 0.4m compr.	610-0711



Tau+ BR 1/15 100mm with EPDM pre-assembled

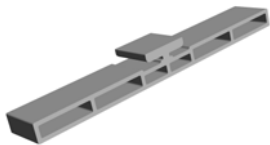
For landscape installation with direct fixation through the high bead

h/w = 15,5/21,6
 Aluminium (EN AW 6063 T66)
 $I_x = 0,25 \text{ cm}^4$
 0,025 kg/pce

	Single part
BR 1/15 CS; landscape pre-ass.	712-0137

Tau+ splice

Inter-connecting Tau+ BR 1/21

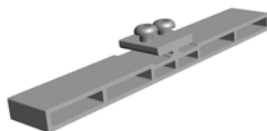


Aluminium (EN AW 6063 T66)
 mounted internally
 l = 150 mm

	Single part
splice BR 1/21 CS	602-0052

Tau+ splice pre-assembled

Inter-connecting Tau+ BR 1/21 with bonding function



Aluminium (EN AW 6063 T66)
 mounted internally
 Incl. pre-assembled small parts (2x stainless flat head screw M6x8mm;TX30)
 l = 150 mm

	Single part
splice BR 1/21 CS; bonding pre-ass.	706-0064



Please note that the transport costs will rise for rail lengths over 2,4 m.

2. Tau+ fixing clips

Description



Tau+ side fixing clip pre-assembled with Alu-Fixband

Fixing the Tau+ rail laterally to the trapezoidal sheet

| Aluminium (EN AW 5754)

	Set 50 Pcs	Set 100 Pcs
Side fixing clip pre-assembled	720-0860	720-0810



Tau+ top fixing clip

Fixing the Tau rail onto the top of the trapezoidal sheet in case of a very low bead height (below 20mm) to the trapezoidal sheet

| Aluminium (EN AW 6063 T66)

	Set 100 Pcs
Top fixing clip	720-0811

Thin metal screw

Fixing the trapezoidal fixations and the Tau+ BR 1/15 landscape



| Chipless screw
| TX-drive 30
| Stainless steel (V2A)
| With gasket

	Set 50 Pcs	Set 100 Pcs
JF3-ZT-2-5,5x25-E11 / A2	720-1187	720-1188

Drilling screw

Fixing the trapezoidal fixations



| With drill bit
| Stainless steel (V2A)
| With gasket

	Set 50 Pcs	Set 100 Pcs
Drilling screw JT3-2-6x25-E 16/2 A2	720-0861	720-0520

3. Tau+ EPDM

EPDM

Description

EPDM self-adhesive

To fit on the bead height as base for the Tau rail



- EPDM 40x20x1 mm used with the side fixing clips
- EPDM 80x20x1 mm used with the top fixing clips

	Set 100 Pcs
EPDM 40x20x1 mm	720-0809
EPDM 80x20x1 mm	720-0857

4. Tau+ Sets of small parts

Description

Slip-security for Tau+ BR 1/21 CS

To ensure the BR 1/21 CS and prevent slipping



- Stainless flat head screw M6x8mm;TX30; A2
- Flat profile 20x17.5x5mm (EN AW 6063 T66)

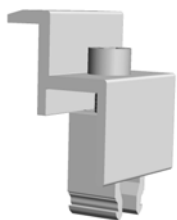
	Set 8 Pcs	Set 40 Pcs
Slip-security BR 1/21 CS	720-1189	720-1190

5. Tau+ Inter-module clamps and module end clamps

Description

End clamp

Fixing the modules to the Tau+ base rails



Incl. small parts (pre-assembled):

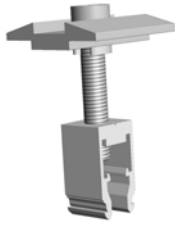
- 1 Module end clamp, Aluminium (EN AW 6063 T66)
- 1 Stainless steel Allen bolt M6
- 1 Clickstone, Aluminium (EN AW 6063 T66)

Lieferbar	Single part	
	blank	black
Frame 33 mm	702-0183	
Frame 35 mm	702-0192	702-0189
Frame 38 mm	702-0188	
Frame 40 mm	702-0184	
Frame 45 mm	702-0185	702-0190
Frame 46 mm	702-0186	702-0191
Frame 50 mm	702-0187	

Module end clamps for different frame heights can be produced to order. Please indicate the desired frame height in your order.

Inter-module clamps

Fixing modules to the Tau rails



Incl. small parts (pre-assembled):

- | 1 Inter-module clamp, Aluminium (EN AW 6063 T66)
- | 1 Stainless steel Allen bolt M6
- | 1 Clickstone, Aluminium (EN AW 6063 T66)

	Single part	
	blank	black
Frame 28 -40 mm	700-0080	700-0083
Frame 33 - 45 mm	700-0081	700-0084
Frame 38 - 50 mm	700-0082	700-0085

6. Cabel fixing

Omega-Clip

Cabel fixation by clicking the Omega-Clip into the base rail



- | plastic
- | high UV-resistant
- | black

	Single part	100 Pcs
Omega-Clip, 8-14mm, black	807-0134	720-0952

7. Tau+ Samples

Product samples Tau+

Sample box with different Tau+ components loosely packed in a carton

	Single part
Loose product samples Tau+	720-1193



the base for solar power

Mounting Systems GmbH
Mittenwalder Straße 9a
D 15834 Rangsdorf

Tel. +49 (0)33708 529-0
Fax +49 (0)33708 529-199

info@mounting-systems.com
www.mounting-systems.com

Subject to technical alterations
2013 © Mounting Systems